

Creating a New Database for Corridor4DM

1. Open the ODBC control panel.
 - a. Open the start menu.
 - b. Select 'Settings.'
 - c. Select 'Control Panel.'
 - d. Select 'Administrative Tools.'
 - e. Select 'Data Sources (ODBC).'
 - f. A window should open allowing you to configure the ODBC data sources.
2. If only one user account will use (export to) the database select the 'User DSN' tab. Otherwise, if multiple users will need to use the database select the 'System DSN' tab. In order to setup a system DSN, the current user must have administrator access to the computer.
3. Press the "Add..." button. A window will appear allowing you to select the database driver.
4. Select the driver with the name 'Microsoft Access Driver (*.mdb).' It is important that this specific driver be used. Other Access drivers may not work.
5. Press the 'Finish' button. A window will appear allowing you to set Access specific settings.
6. In the 'Data Source Name' field enter a name to identify the database by. This is the name that will appear in Corridor4DM.
7. Press the 'Create...' button. This will open the 'New Database' window.
8. Select the directory where you wish to save the database file.
9. Enter a name for the new database. (Replace the * in the above dialog with the filename for the database to be created.)
10. Press the OK button to create the database file.
11. In the 'ODBC Microsoft Access Setup' window press OK to save the database settings.
12. Start the Corridor4DM application.
13. Press the 'Export Data' button. The 'Export Data from Corridor4DM-SPECT' window will appear.

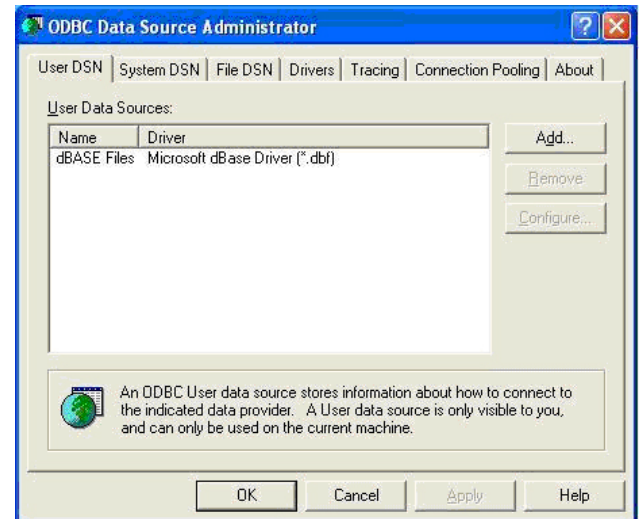


Figure 1: ODBC Data Source Administrator Dialog.

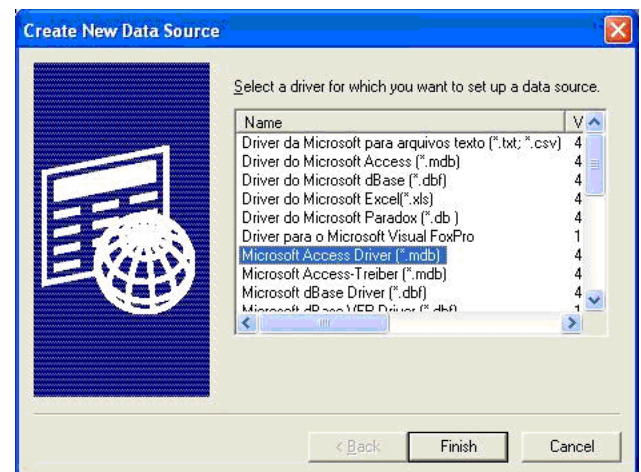


Figure 2: Create New Data Source Dialog.

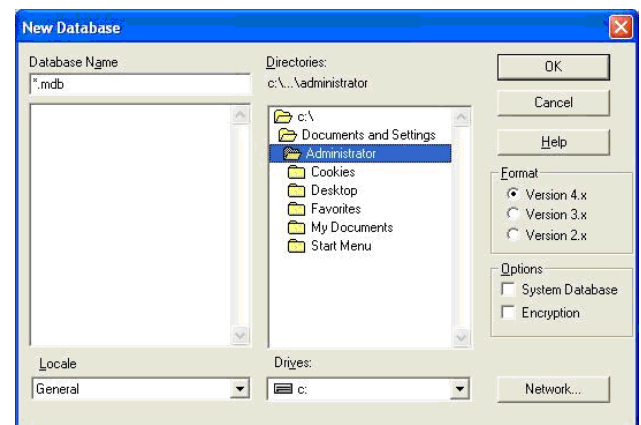


Figure 3: Create New Database Dialog

14. If the 'Export Data to ODBC Database' toggle is not selected, select it.
15. Press the 'Refresh List' button. This will search the system for compatible databases. This may take a few minutes. The newly created database should appear in the list.
16. Select the newly created database in the list.
17. Press the 'Create New Table' button. The 'Database Configuration Setup' window will appear.
18. Enter a name for the new table, or use the default provided.
19. A data dictionary file will need to be created for the table. This is a file that specifies the mapping between the values Corridor4DM will export and the columns in the table. Press the 'Create New' button.
20. Select a directory and file name for the dictionary file. Then, press the 'Save' button. The 'Edit Data Dictionary File' window will appear.
21. Remove any unwanted Corridor4DM variables. Select an unwanted variable and then press the 'Remove' button. Repeat this until all unwanted Corridor4DM variables are removed. Or, press the 'Remove all' button to remove all the Corridor4DM variables.
22. Add any required Corridor4DM variables. Press the 'Add' button. This will display a list of available Corridor4DM variables. Select the one you wish to add. Repeat this until all required Corridor4DM variables have been added. Or, press the 'Add all' button to add all of the available Corridor4DM variables.
23. For each selected Corridor4DM variable, you can set the column name to map to in the newly created database.
24. When the data dictionary file is set up correctly, press the 'Save' button.
25. If you wish to keep the database current with Corridor4DM at all times, set the 'Automatically export to this database on process' toggle. Otherwise unset it. This will cause Corridor4DM to export to the database whenever data is changed, such as when Corridor4DM processes a study, or when it saves patient information. If this option is set, the records in the database may be overwritten with new data without prompting the user.

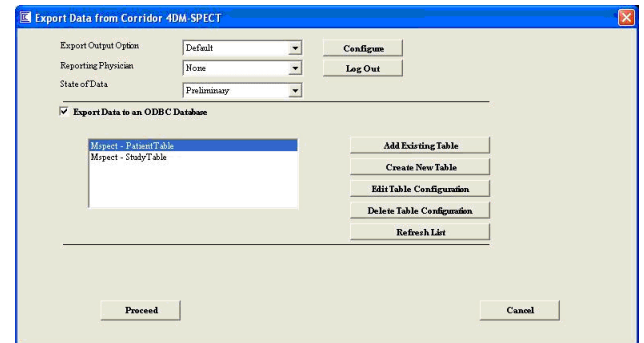


Figure 4: Export Data Dialog.

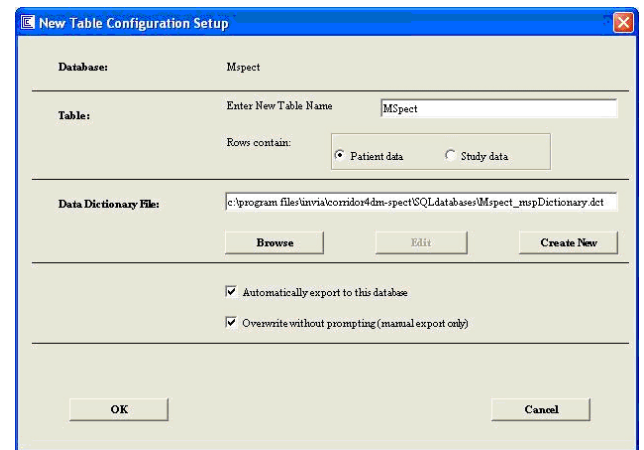


Figure 5: Create New Table Configuration Dialog.

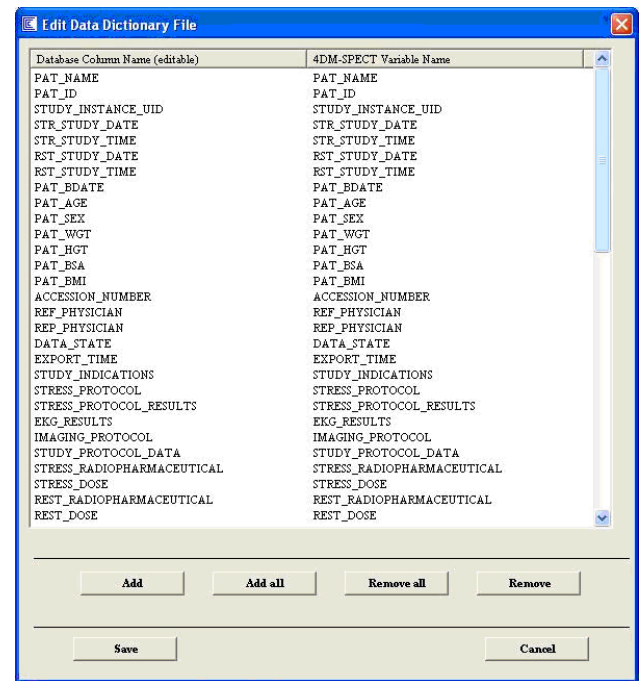


Figure 6: Edit Data Dictionary File Dialog..

26. If you always wish to overwrite records with new data select the ‘Overwrite without prompting (manual export only)’ option. Otherwise unset it. If this toggle is not set, Corridor4DM will prompt the user when it needs to overwrite a record. Records are overwritten when they match key fields. This setting has no effect when databases are exported automatically.
27. Press the ‘OK’ button to save the database settings.

Exporting to an Existing MS Access Database

Registering the database with ODBC.

1. Open the ODBC control panel.
 - a. Open the start menu.
 - b. Select ‘Settings.’
 - c. Select ‘Control Panel.’
 - d. Select ‘Administrative Tools.’
 - e. Select ‘Data Sources (ODBC).’
 - f. A window should open allowing you to configure the ODBC data sources.
2. If only one user account will use (export to) the database select the ‘User DSN’ tab. Otherwise, if multiple users will need to use the database select the ‘System DSN’ tab. In order to setup a system DSN the current user must have administrator access to the computer.
3. Press the “Add...” button. A window will appear allowing you to select the database driver.
4. Select the driver with the name ‘Microsoft Access Driver (*.mdb).’ It is important that this specific driver be used. Other Access drivers may not work.
5. Press the ‘Finish’ button. A window will appear allowing you to set Access specific settings.

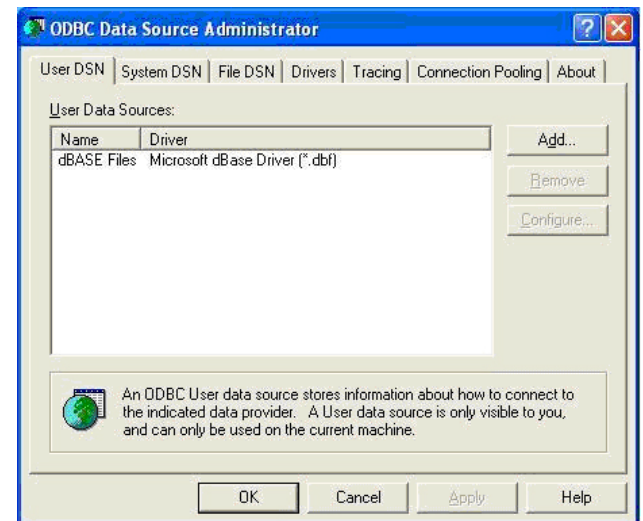


Figure 7: ODBC Data Source Administrator Dialog.

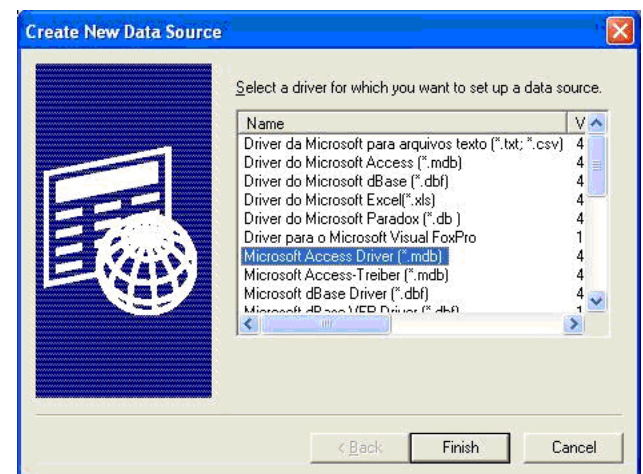


Figure 8: Create New Data Source Dialog.

6. In the 'Data Source Name' field enter a name to identify the database by. This is the name that will appear in Corridor4DM.
7. Press the 'Select...' button. This will open the 'Select Database' window.
8. Select the directory and filename where the database file is located.
9. Press the OK button.
10. In the 'ODBC Microsoft Access Setup' window press OK to save the database settings.

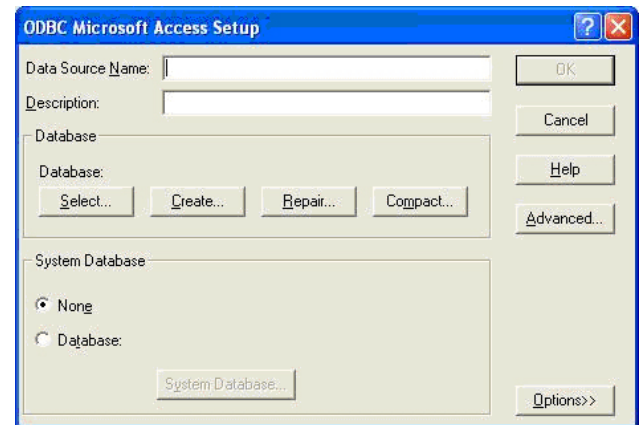


Figure 9: ODBC Access Setup Dialog.

Set up Corridor4DM to export to an existing table in a MS Access database already registered with ODBC.

11. Start the Corridor4DM application.
12. Press the 'Export Data' button. The 'Export Data from Corridor4DM' window will appear.
13. If the 'Export Data to ODBC Database' toggle is not selected, select it.
14. Press the 'Refresh List' button. This will search the system for compatible databases. This may take a few minutes.
15. Select the database you wish to configure Corridor4DM to export to.
16. Press the 'Add Existing Table' button. The 'Database Configuration Setup' window will appear.
17. Select the table you wish to configure Corridor4DM to export to from the table menu.

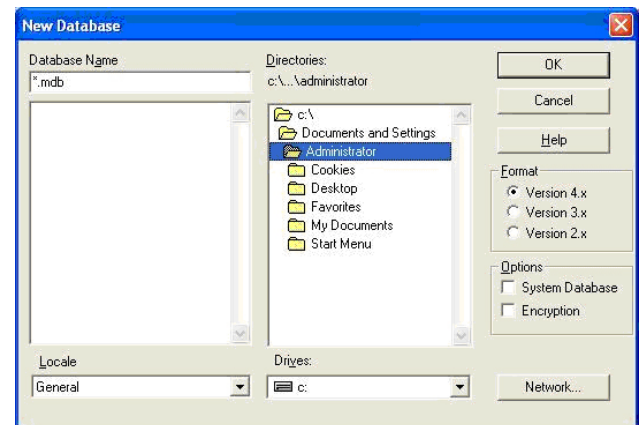


Figure 10: Select Database Dialog.

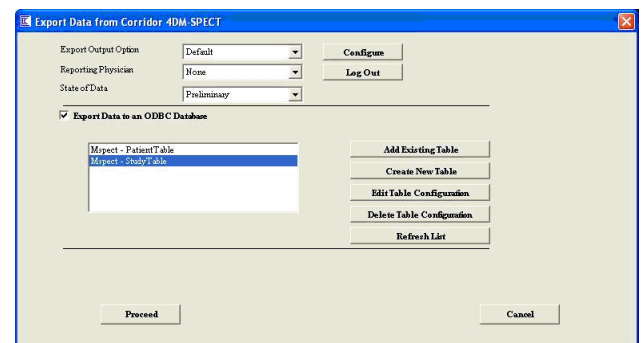


Figure 11: Export Data Dialog.

18. A data dictionary file will need to be created for the table.
This is a file that specifies the mapping between the values Corridor4DM will export and the columns in the table. Press the 'Create New' button.
19. Select a directory and file name for the dictionary file. Then, press the 'Save' button. The 'Edit Data Dictionary File' window will appear.
20. Remove any unwanted Corridor4DM variables. Select an unwanted variable and then press the 'Remove' button. Repeat this until all unwanted Corridor4DM variables are removed. Or, press the 'Remove all' button to remove all the Corridor4DM variables.
21. Add any required Corridor4DM variables. Press the 'Add' button. This will display a list of available Corridor4DM variables. Select the one you wish to add. Repeat this until all required Corridor4DM variables have been added. Or, press the 'Add all' button to add all of the available Corridor4DM variables.
22. For each selected Corridor4DM variable, you can set the column name to map to in the newly created database. These names must match the column names in the table.
23. When the data dictionary file is set up correctly, press the 'Save' button.
24. If you wish to keep the database current with Corridor4DM at all times, set the 'Automatically export to this database on process' toggle. Otherwise unset it. This will cause Corridor4DM to export to the database whenever data is changed, such as when Corridor4DM processes a study, or when it saves patient information. If this option is set, the records in the database may be overwritten with new data without prompting the user.
25. If you always wish to overwrite records with new data select the 'Overwrite without prompting (manual export only)' option. Otherwise unset it. If this toggle is not set, Corridor4DM will prompt the user when it needs to overwrite a record. Records are overwritten when they match key fields. This setting has no effect when databases are exported automatically.
26. Press the 'OK' button to save the database settings.

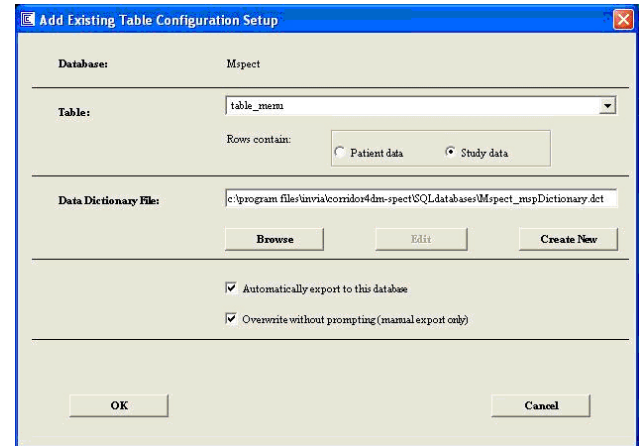


Figure 12: Add Existing Table Dialog.

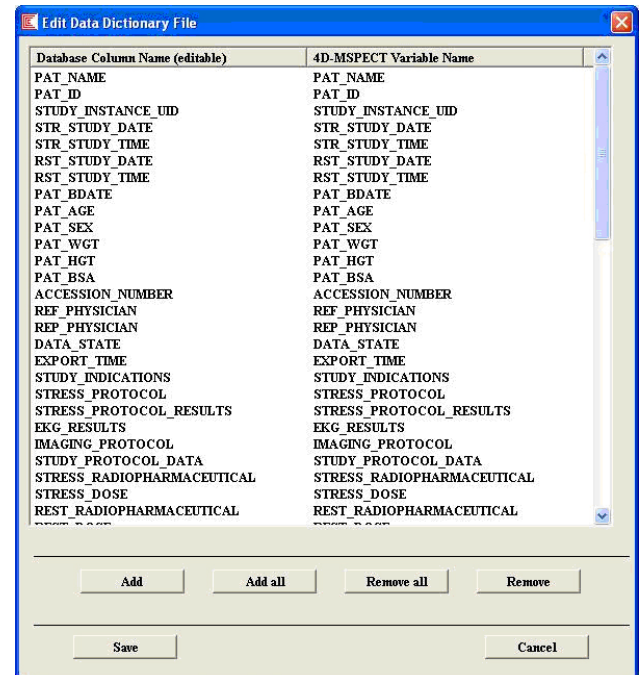


Figure 13: Edit Data Dictionary Dialog.

Database Troubleshooting

- 1) When I export to a database it reports that the operation was successful, but the new records are not in the database table.
 - Check to make sure all the primary key fields that are set up in the database table are also set up in the dictionary file for Corridor4DM.
- 2) When I export to a database it does not export some of the Corridor4DM variables I specified.
 - Check to make sure the Corridor4DM variable is listed in the 'Edit Data Dictionary File' window. Make sure the column name field matches the column name in the database table.
 - If data is unspecified within the Corridor4DM application when it is exported a NULL or empty value may be exported in its place. This may occur is a study isn't processed, patient information hasn't been filled out or a type of study isn't selected.
- 3) When I export to a database I get an ERROR. S0022 message.
 - Check to make sure that the column with the field name in the error message (COLUMN_NAME above) is in the database table.
 - Check to make sure that the column name in the 'Edit Data Dictionary File' window is spelled correctly.
- 4) When I export to a database table old records are not updated. Instead, new records are added.
 - Make sure you have at least one of the following Corridor4DM variables listed in the 'Edit Data Dictionary File' window. These are used to determine when to update and when to add a new record. Also, make sure the columns that these values map to are setup as primary keys within the database table.
 - PAT_NAME
 - PAT_ID
 - STUDY_DATE
 - STUDY_TIME
 - STUDY_IDTYPE
 - STUDY_IDSTRING
- 5) I always want new records when I export to a database table. I never want records to be updated.
 - Change the settings for all the primary keys in the database table so that they are no longer primary keys.
 - Or, include the Corridor4DM variable EXPORT_TIME in the database export. Then, make the column that this variable maps to a primary key.

