


# How to Restore Configurations Settings

This Help Sheet describes how to to restore Preference and Configuration settings for 4DM-SPECT.

## STEP 1. Access the Preferences Dialog

Click the  button from the Corridor4DM application button panel (lower left strip of button). This will present the Preferences Dialog (c.f Figure 1).

## STEP 2. Access the General Options Page

From the Preference Dialog, select the “General Options” tab. We will use this screen select the Restore feature.

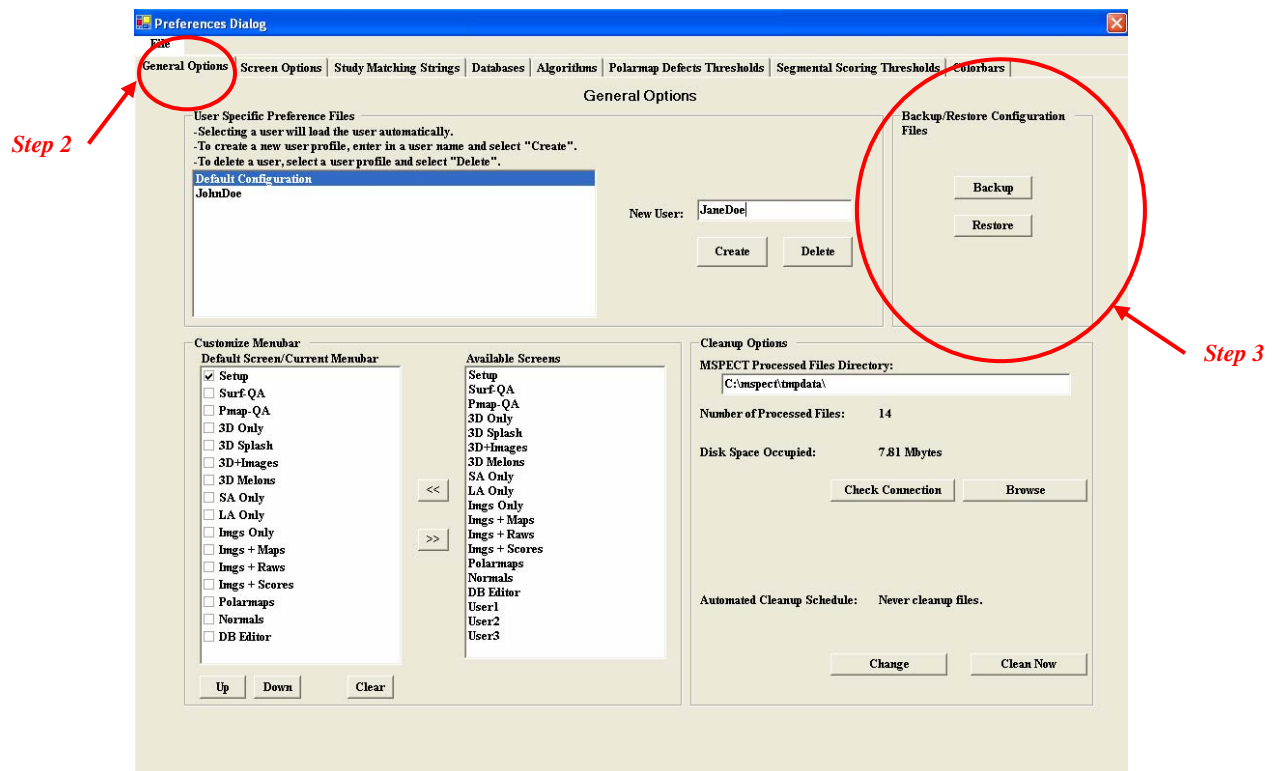
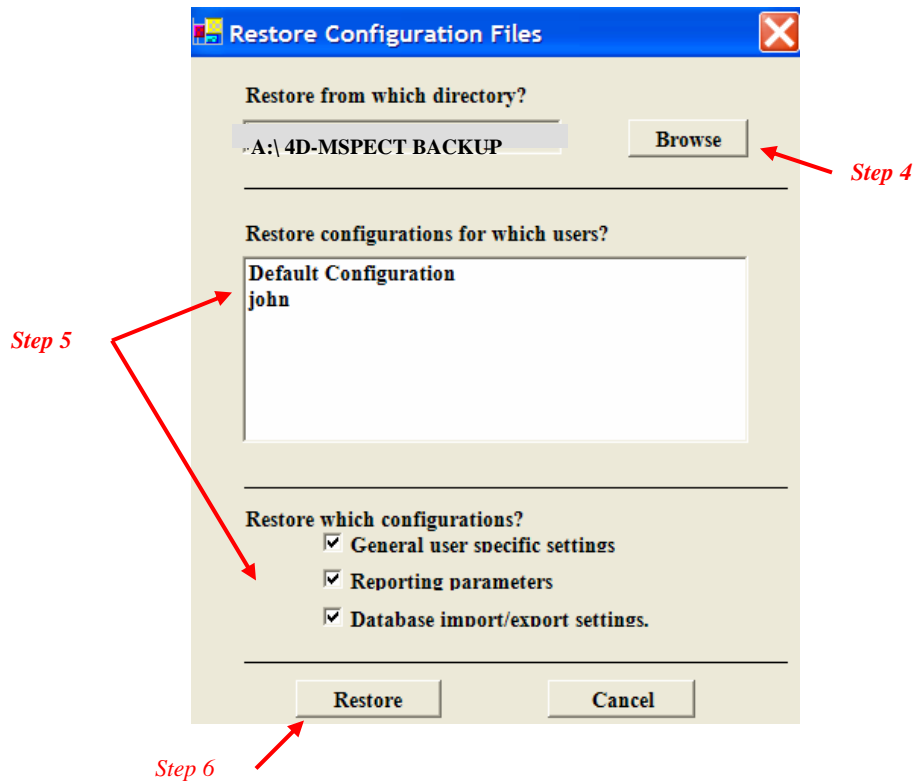


Figure 1. Preferences Dialog displaying the General Options page.

### STEP 3. Access the Restore Dialog

Click the Restore button in the “Backup/Restore Configurations Dialog box. This will present the Restore Configurations Dialog box.



### STEP 4. Choose the Source Directory

Select the “Browse” button to select the drive where the configuration settings were saved. (the Default is A:\) The program will automatically search the selected location for the configuration files and will display the results of this search in the list dialog.

### STEP 5. Choose Configuration Files to Restore

To Restore specific User Configuration files, highlight the name from the list, toggle on those configuration files that you would like to Restore.

### STEP 6. Restore the Files

Click “Restore” and the files will be restored into the 4DM-SPECT environment. (You do not need to specify a destination directory)