

How To Customize the Study Layouts for Review Screens

Corridor4DM allows the user to define the types of studies to display on each screen. In this example, we will set the study layout priorities for the following screens.

- Setup - combination of perfusion and function
- Surf-QA - layout synchronized to Setup
- Imgs+Raw - display perfusion studies (eg. ungated Stress / Rest)
- Imgs Only - layout synchronized to Imgs+Raw
- Imgs+Scores - layout synchronized to Imgs+Raw
- 3D+Images - display gated studies only for function

To configure 4D-MSPECT to have this list of screens, look at the Help Sheet – “**Modifying the list of review screens**”.

STEP 1: Open the Preferences Dialog

Click the **Defaults** button from the Corridor4DM application button panel (lower left strip of button). This will present the Preferences Dialog (c.f Figure 1) for step 2.

STEP 1. Open the Setup Screen Options Form

From the Preference Dialog, box, first select the Screen Options tab and then select the **Setup** screen tab. We will use this screen tab to set your Preferences.

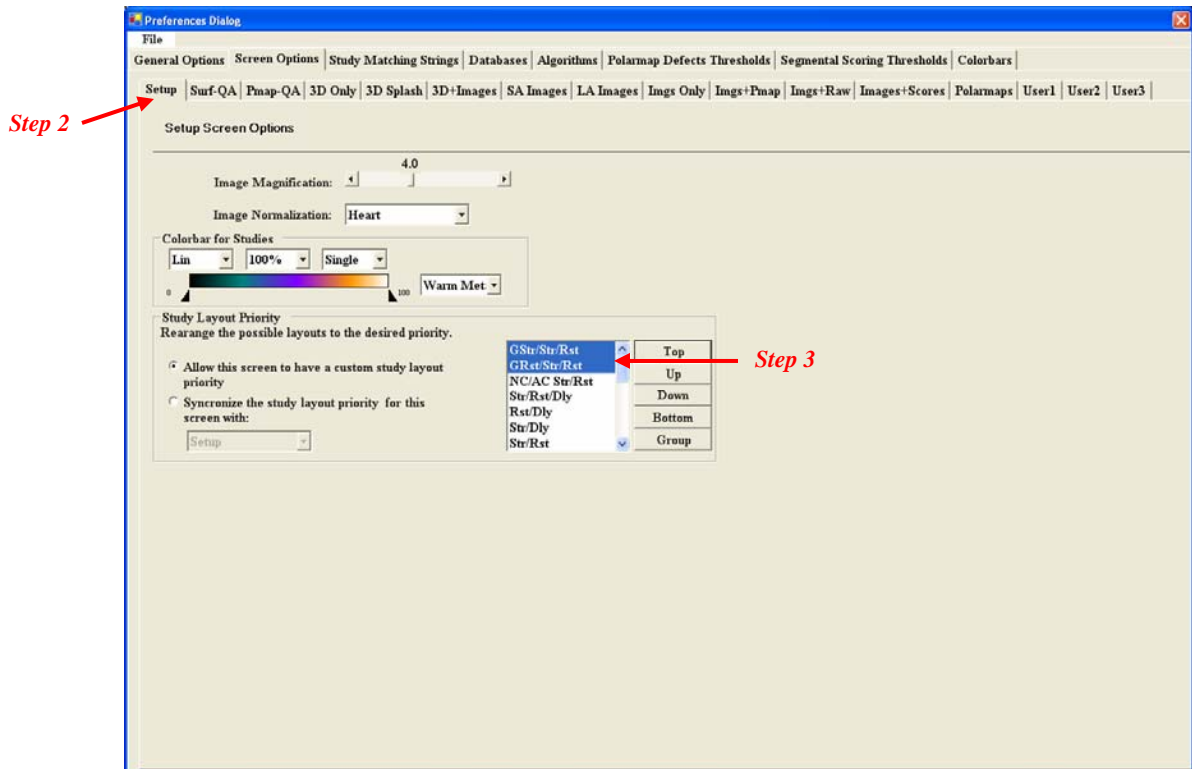


Figure 2. Setup Screen Option Page of Preferences Dialog.

STEP 2. Set the Layout Priority

For processing, we want as many studies as we can on the Setup screen. For most protocols, the “Function+Perfusion” (eg. GStr/Str/Rest and GRst/Str/Rst) options provide the layouts we need.

STEP 3. Highlight the menu options for **GStr/Str/Rest** and **GRst/Str/Rst**

STEP 4. Click the Top button to move these options to the top of the list.

STEP 4. Synchronize the Surf-QA and Setup Screens

- a. Select the “Surf-QA” screen tab.

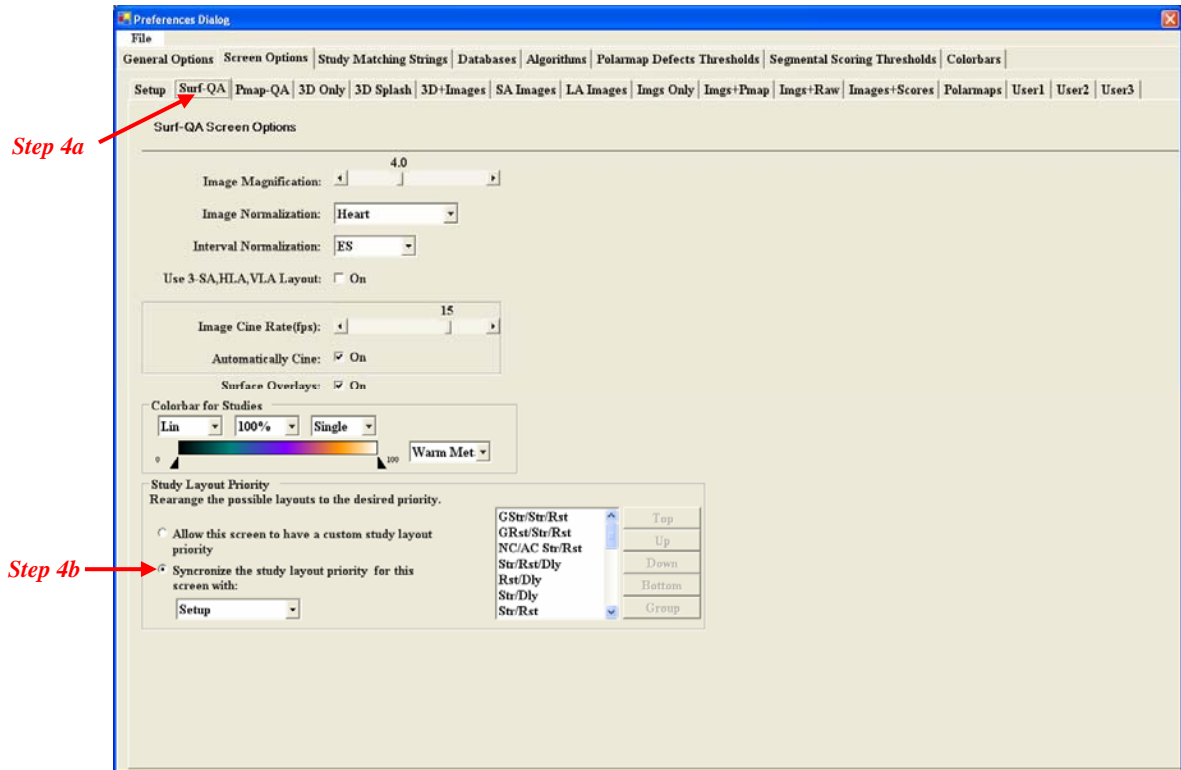


Figure 3. Surf-QA Screen Option Page of Preferences Dialog.

- b. Highlight the toggle “Synchronize the study layout priority for this screen with” and make sure the “Setup” screen is specified in the menu below the toggle.

STEP 5. Set Layout Priority for Perfusion Review Screens

For the Perfusion Review screen, we only want to look at perfusion from the ungated studies. If we only have gated studies, this is okay as time-composite studies will be automatically constructed for these screens. But if both gated and ungated studies are input, we want to look for perfusion abnormalities in the ungated studies.

Our Perfusion Review screens will consist of “Imgs+Raw”, “Imgs Only” and “Imgs+Scores”. We will set the study layout priority settings on the “Imgs+Raw”, and synchronize “Imgs Only” and “Imgs+Scores” to this screen..

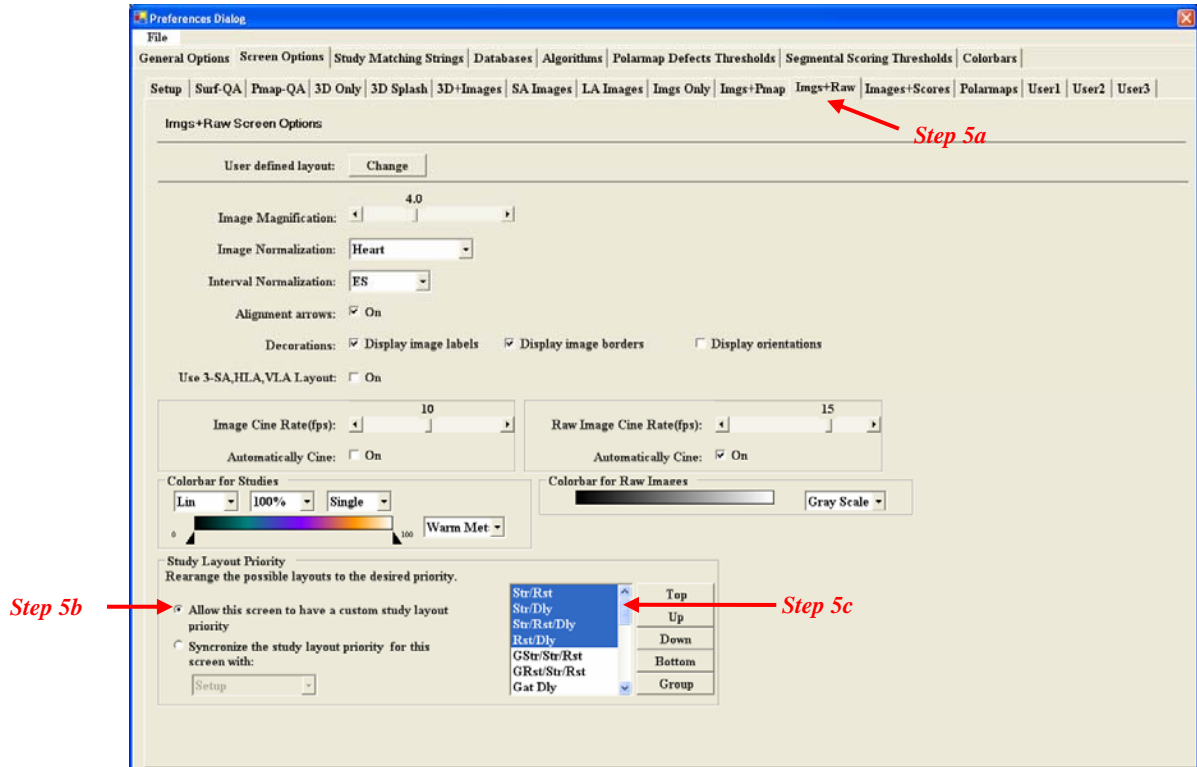
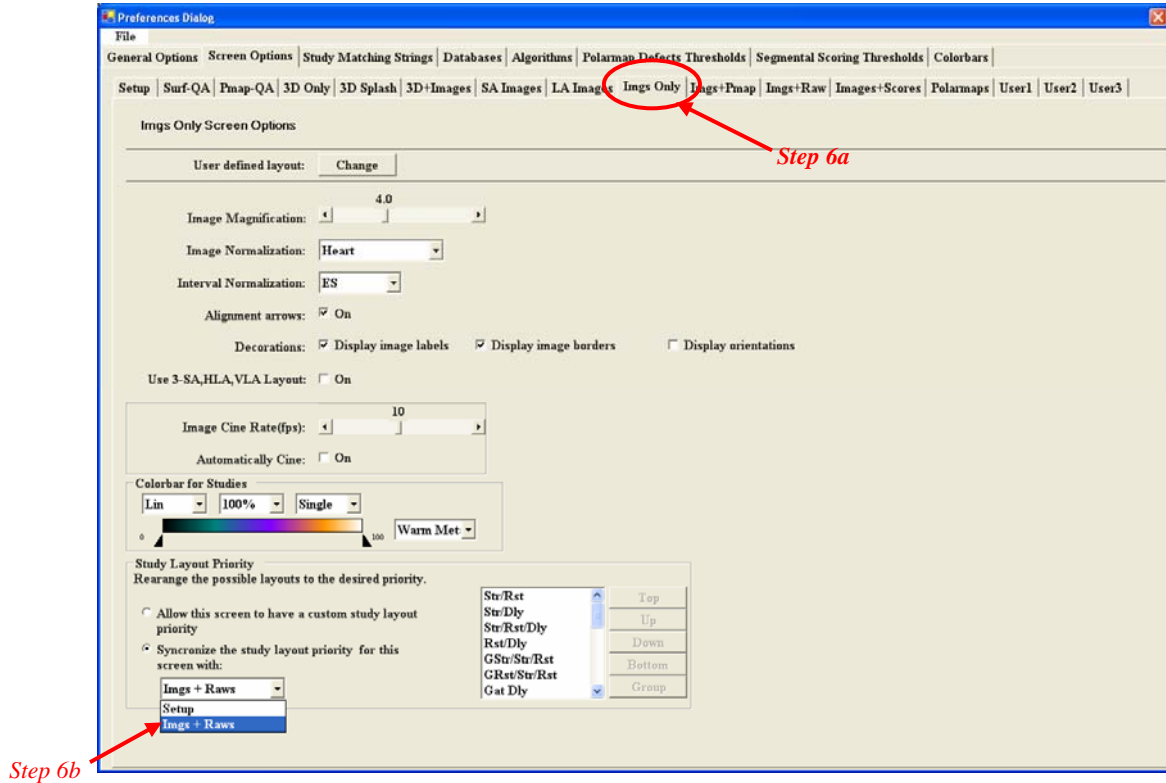


Figure 2. Imgs+Raw Screen Option Page of Preferences Dialog.

- Select the “Imgs+Raw” tab.
- Highlight the toggle “Allow this screen to have an custom study layout priority”.
- Move the “Str/Rst”, “Str/Dly”, “Str/Rst/Dly” and “Rst/Dly” options to the top of the priority list.

STEP 6. Synchronize the Other Perfusion Review Screens

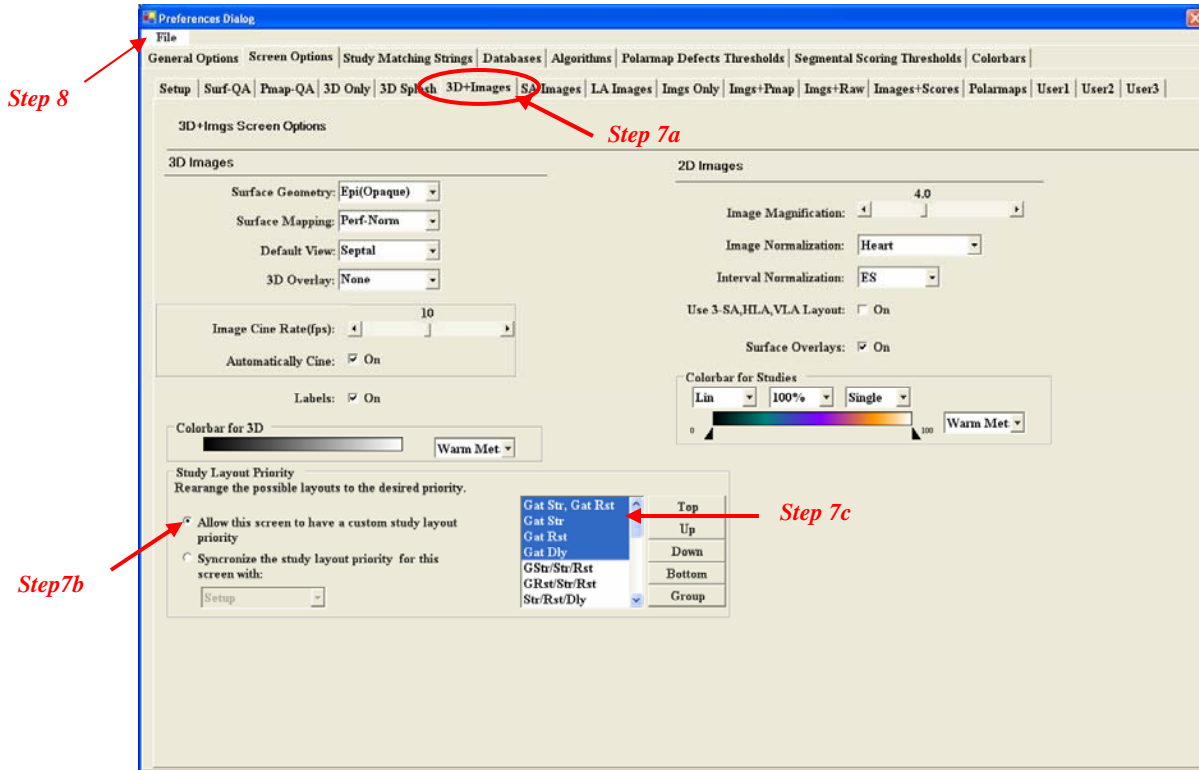
- Select the “Imgs Only” tab
- Select the toggle “Synchronize the study layout priority for this screen with” and choose the “Imgs+Raw” option from the menu below the toggle.
- Repeat STEPS 6a and 6b for the “Imgs+Maps” and “Imgs+Scores” screens.



STEP 7. Set Layout Priority for Function Review Screens

For the Function Review screen, we want to look at LV function from the gated studies. For these screens, we want to give the gated studies highest priority for loading.

- Select the “3D+Imgs y” tab
- Highlight the toggle for “Allow this screen to have a custom layout priority”.
- Move the “Gat Str, Gat Rst”, “Gat Str”, “Gat Rst” and “Gat Dly” options to the top of the priority list.



STEP 8. Save Settings

Save your settings, by selecting the “**Save**” option under the **File** menu. This will bring you back to the main window of the Corridor4DM application.