

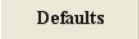
## How to Create a Custom Summary Screen

4D-MSPECT allows the user to create custom review screens using the available image objects (images, polarmaps, scoring maps, 3D renderings and LV volume curve).

In this example, we will create a Summary review screen which include the following objects

- 3 SA, HLA, VLA images
- Quantitative Blackout Polar Maps
- 17 segment scoring maps
- 3D Images

### **STEP 1: Open the Preferences Dialog**

Click the  button from the Corridor4DM application button panel (lower left strip of button). This will present the Preferences Dialog (c.f Figure 1) for step 2.

### **STEP 2: Select the User1 Screen**

From the “Screen Options” page, select the “User1” tab. We will use this screen tab to create our custom Summary screen.

**NOTE:** If a custom screen has already been assigned to the “User1” tab, select “User2” or “User3”.

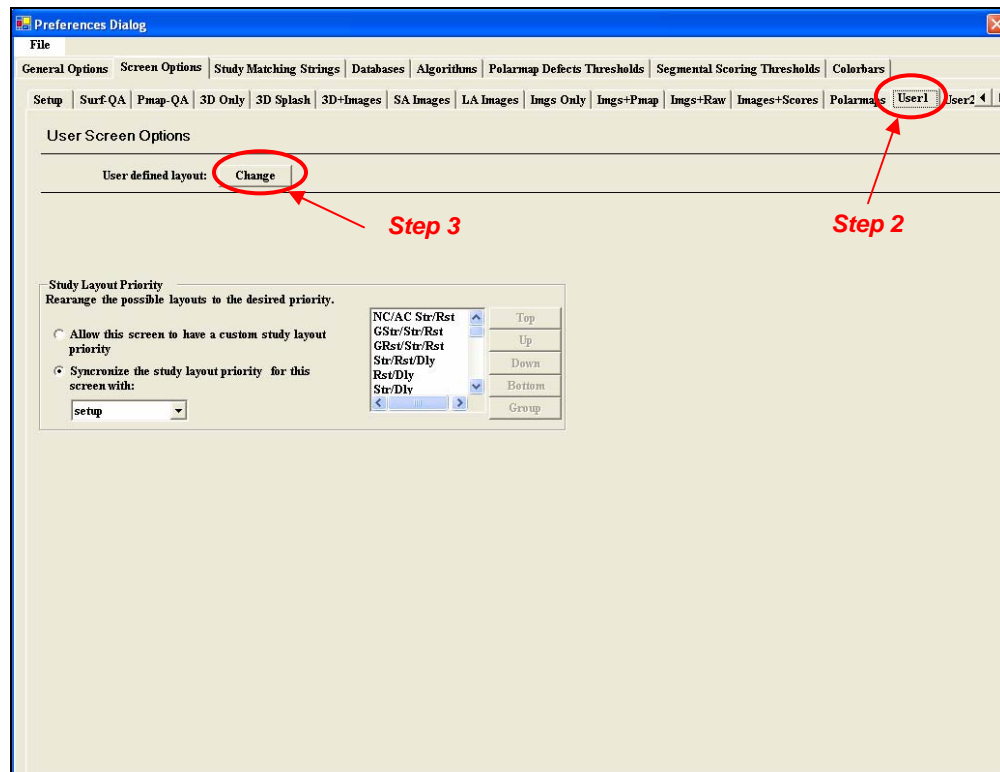


Figure 1. The Screen Options Page of the Preferences Dialog.

### STEP 3: Open the Screen Layout Editor

To define the layout of the screen, click the **Change** button. This will display the “Screen Layout Editor” dialog in Figure 2.

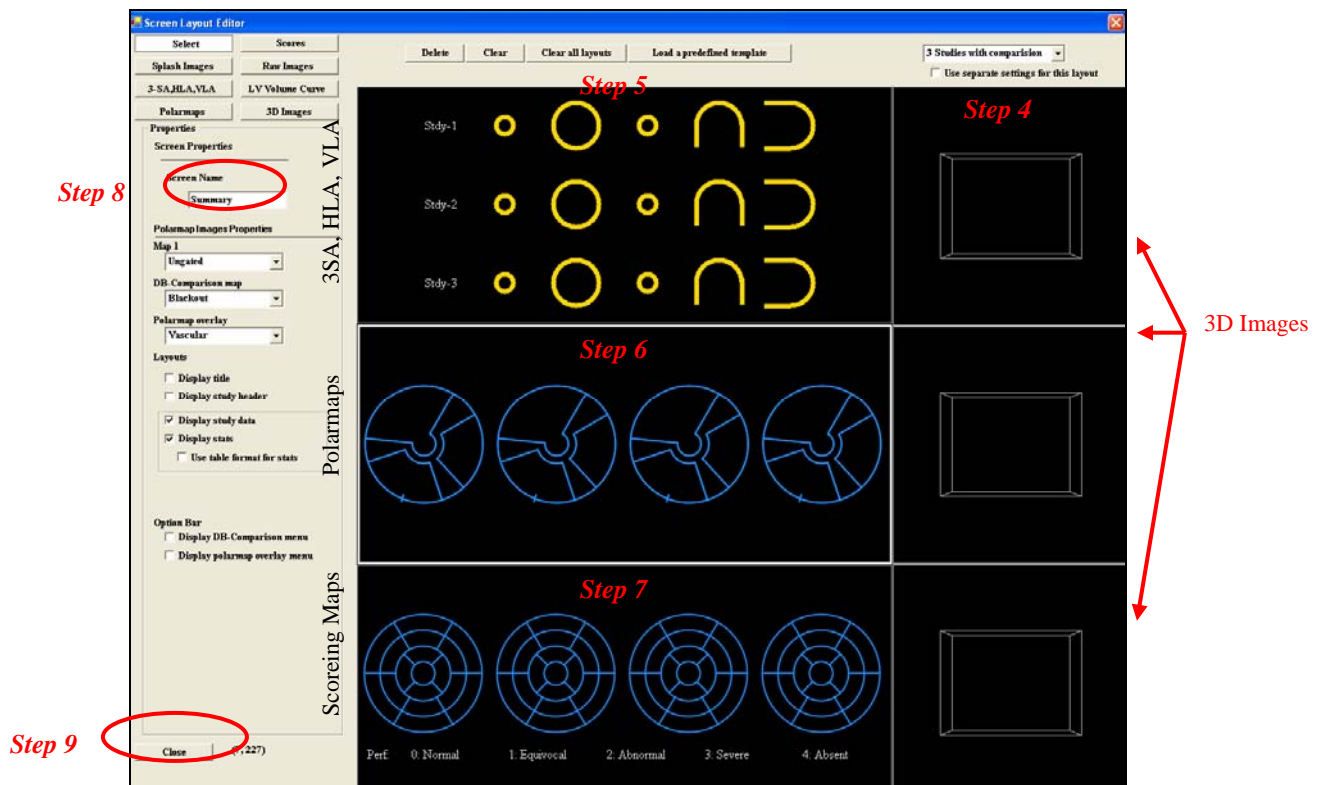


Figure 2. The Screen Layout Editor Dialog.

### STEP 4: Position the 3D Image Object

From button list in the upper left corner of the dialog, select the 3D Images object first as this object needs to touch a minimum of 3 screen borders. For this screen, position the 3D Images along entire the right side of the screen.

### STEP 5: Position the 3SA,HLA,VLA Image Object

Next select the “3SA, HLA, VLA” object which will display apical, mid and basal short axis images and a single mid VLA and HLA image.

### STEP 6: Position the Polar Map Image Object

Select the Polar Maps object and position in on the screen. For the polar map object, we will set options with the available menus to display “Blackout Maps” and use a “Vascular Overlay” as displayed in Figure 2.

### STEP 7: Position the Scores Object

For the final object, select the Scoring Maps and position this object in the remaining space.

### STEP 8: Create a Screen Name

Assign a screen name. We have chosen to name this screen ‘Summary’.

## STEP 9: Close the Screen Layout Editor

Close the Screen Layout Editor by clicking the “Close” button. This will return you to the “Preferences Dialog” in Figure 2.

## STEP 10: Add New Screen to List

- Choose the “General Options” tab to display the dialog page in Figure 3. We use this tab to add the **Summary** screen to the list of screens available to Corridor4DM.
- Select the Summary screen from the available list of review screens.
- Click on the “<<” button to move the Summary screen to the current list of screens in the menu bar. You can position the order of the screens using the “Up” and “Down” buttons.

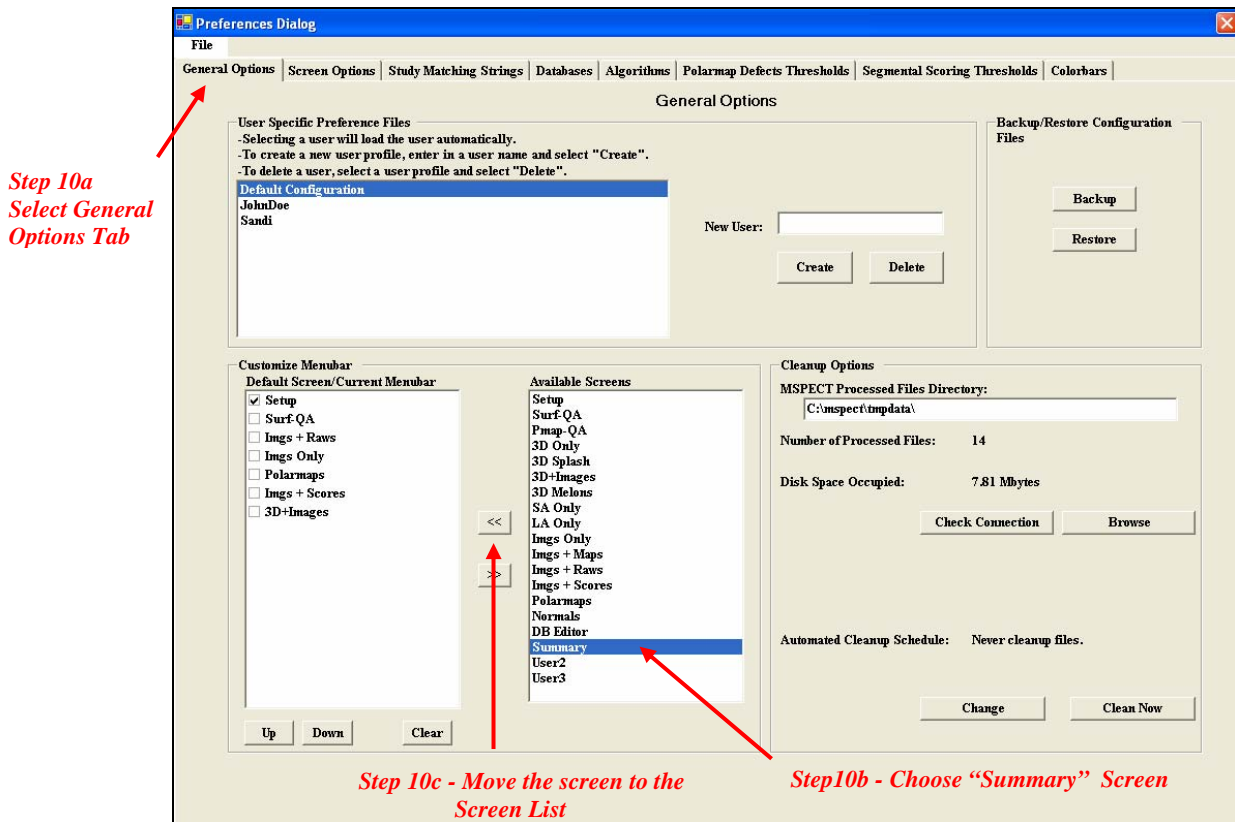


Figure 3. The General Option page of the Preferences Dialog.

## STEP 11: Save the Changes

From the “File” menu, select “Save” which will apply your settings to the current Corridor4DM session and save these settings for future Corridor4DM sessions.