


How to Backup Configurations Settings

Prior to a new install or transferring preference files between computers, 4DM-SPECT has a Backup feature which is useful for saving three types of configuration files:

- **General User Specific Settings** – Stores all the User defined preference settings that can be defined for any of the image display screens using the Preference Dialog.
- **Reporting Parameters** – Stores the settings defined on the “Preference Setting” page of the Patient Information Dialog. (user defined indications, list of referring and ordering physicians, and reporting physicians).
- **Database Export Settings** - Stores the User defined export configurations set in the Export Data Dialog.

This Help Sheet describes how to to backup Preference and Configuration settings for 4DM-SPECT.

STEP 1. Access the Preferences Dialog

Click the  button from the Corridor4DM application button panel (lower left strip of button). This will present the Preferences Dialog (c.f Figure 1).

STEP 2. Access the General Options Page

From the Preference Dialog, select the “General Options” tab. We will use this screen select the **Backup** feature.

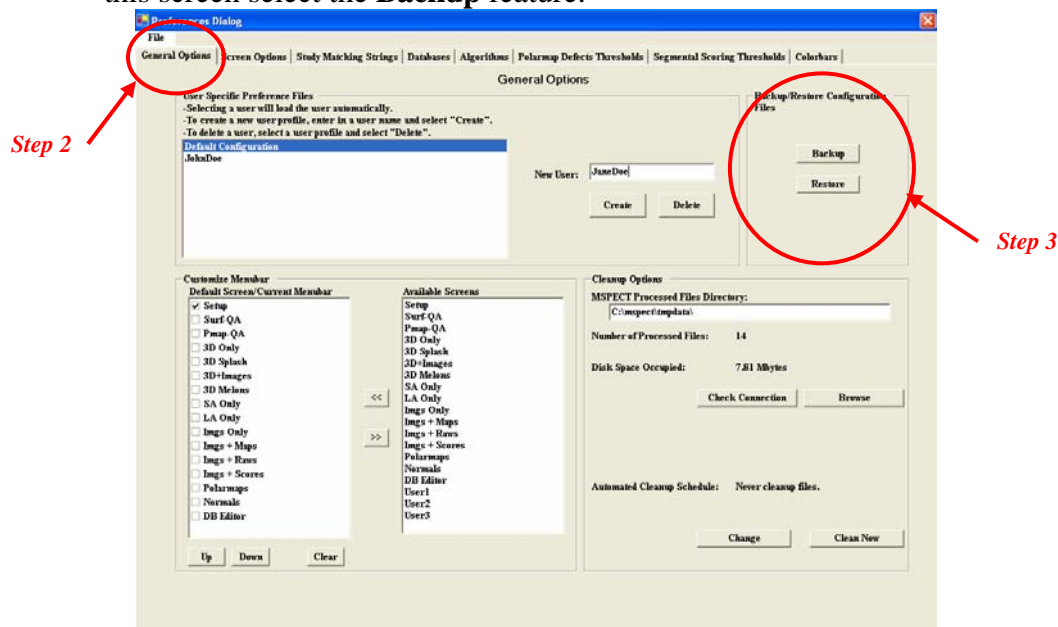
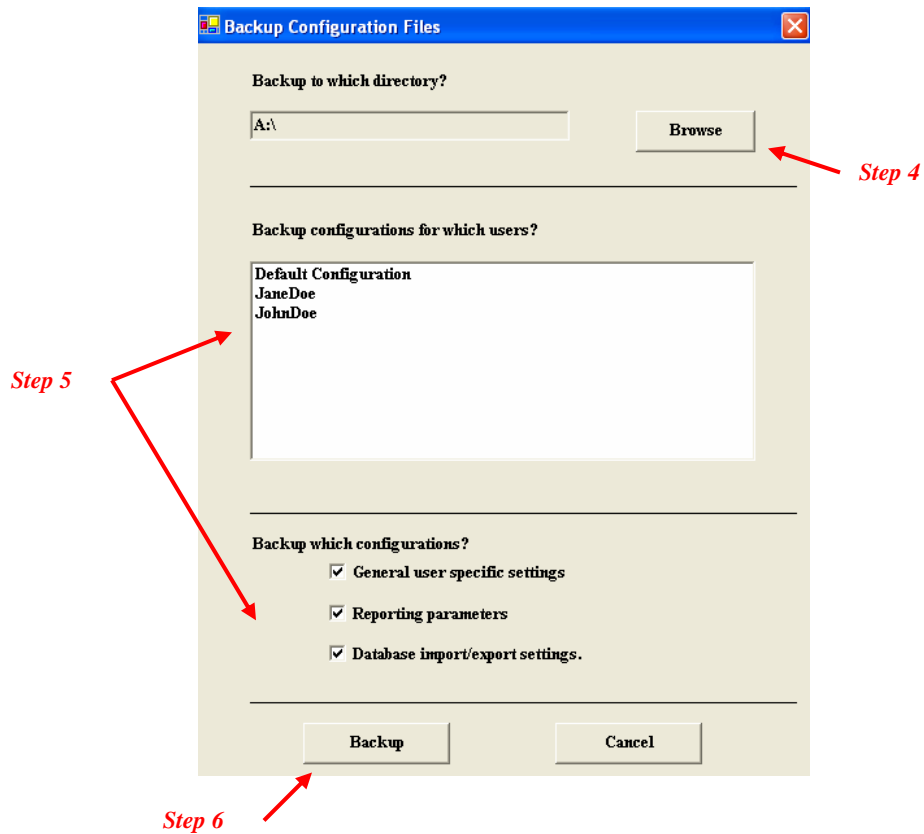


Figure 1. Preferences Dialog displaying the General Options page.

STEP 3. Access the Backup Dialog

Click the Backup button in the “Backup/Restore Configurations Dialog box. This will present the Backup Configurations Dialog box.



STEP 4. Choose the Destination Directory

Select the “Browse” button to select the drive where the configuration settings will be saved. (the Default is A:\)

STEP 5. Choose Configuration Files to Backup

To backup specific User Configuration files, highlight the name from the list, toggle on those configuration files that you would like to save/backup.

STEP 6. Backup the Files

Click “Backup” and the files will be saved on the chosen specified drive.