

QUICK REFERENCE

CORRIDOR4DM PERSONAL V5.2 SOFTWARE UPDATE GUIDE

Corridor4DM Version:
5.2(Personal)

Target Audience:
IT Personnel
Physicians

Primary Workstation:
Stand-alone PC or
Laptop



Note: If an error occurs during the update or you need assistance, please call our Product Support line at (734) 205-1231, x501.



To complete the 4DM Personal update, follow these step-by-step instructions:

- Close all Corridor4DM and Corridor Browser applications that may be running.
- Insert the 4DM Installation CD into your PC's or laptop's CD/DVD Drive.
- At this point, the **InstallShield Wizard** program begins and will search for the installation requirements. If the installation wizard **does not** start automatically, navigate to the CD contents and double-click the **Setup** icon (see Figure 1).
- Before installation continues, a window will appear to confirm that you want to continue the update (see Figure 2). Click **Yes**.
- The **InstallShield Wizard for Corridor4DM(Personal) v5.2** window is presented (see Figure 3).
- Click **Next**.
- The installation may run for several minutes. Once complete, the **InstallShield Wizard Completed** window is presented which states the application was successfully installed. (see Figure 4).
- Click **Finish** to exit the Wizard.

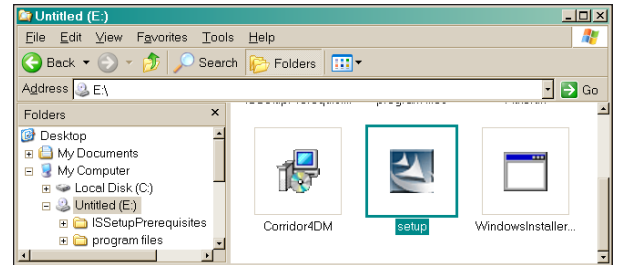


Figure 1: Shows the navigation path to the Setup.exe icon.

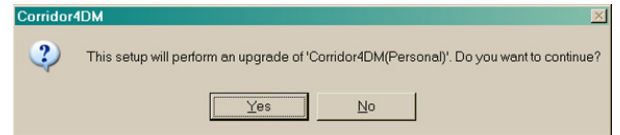


Figure 2: Shows a Confirmation window to continue with the update.

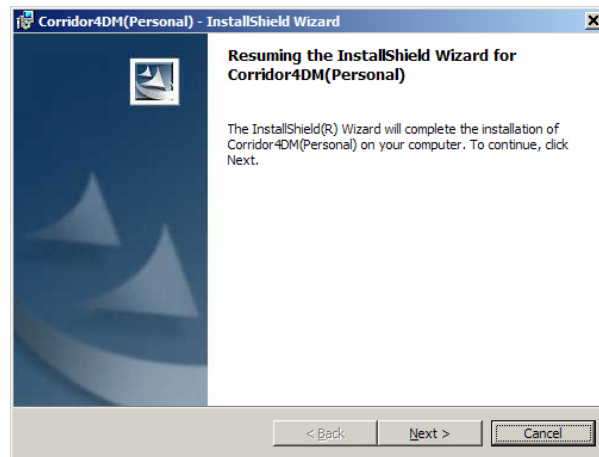


Figure 3: Shows the Resume Installation window

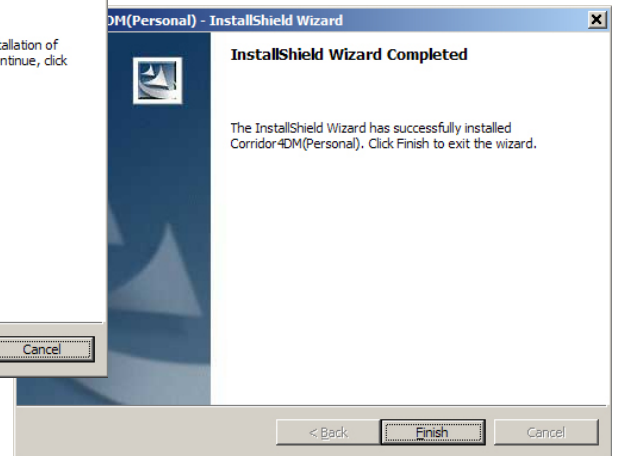


Figure 4: Shows the Installation is Completed window.