

How to Create User Specific Preference Settings


4DM-SPECT provides preference settings that allow each individual user to customize their own environment.

In this help sheet, we will create preference settings for user JohnDoe.

IMPORTANT

It is recommended that you use only alphanumeric characters in the user name. Do not use spaces or non-standard characters such as *, @, #, \, or /.

STEP 1. Access the Preferences Dialog

Click the  button from the Corridor4DM application button panel (lower left strip of button). This will present the Preferences Dialog (c.f Figure 1).

STEP 2. Access the General Options Page

Choose the **General Options** tab to provide the form to create a new User.

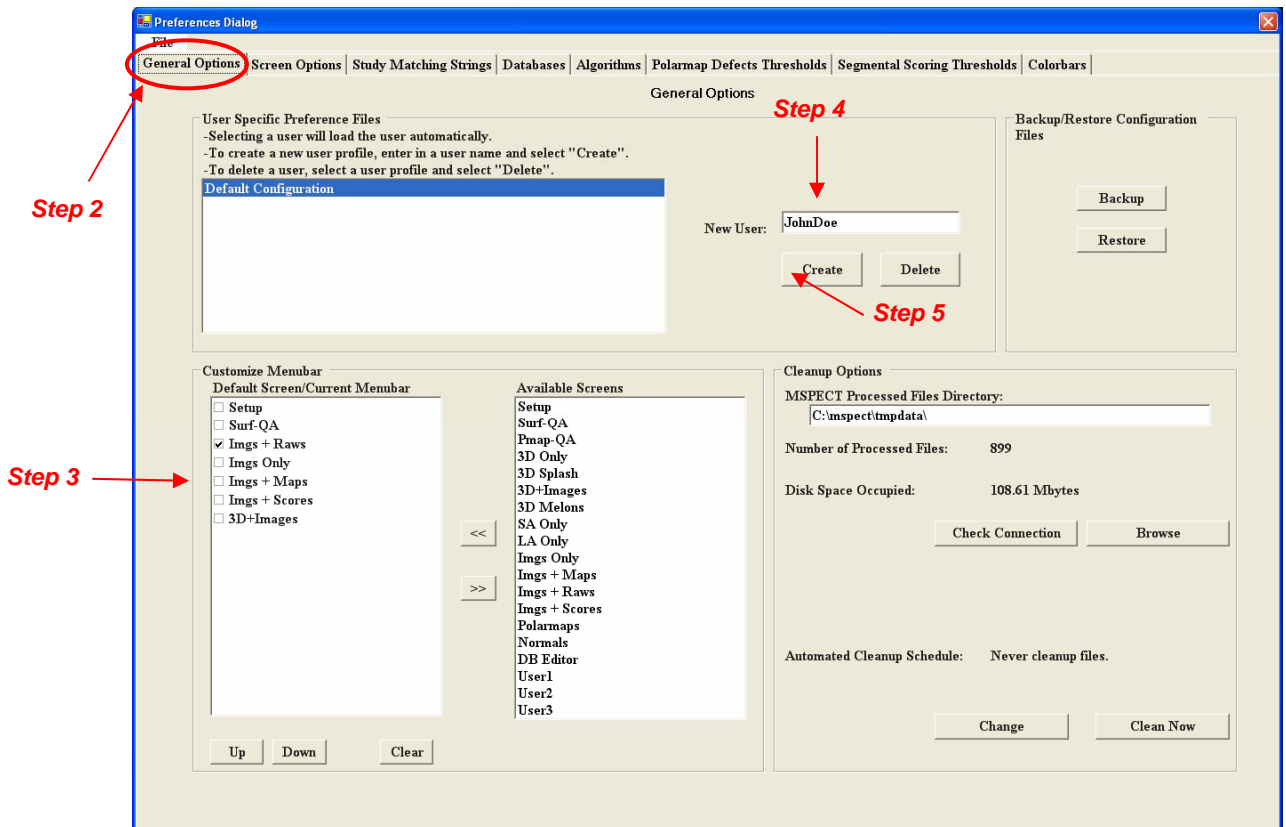


Figure 1. The “General Options” page of the Preferences dialog.

STEP 3: Modify the List of Display Screens

In this step, we will change the list of screens available on the main screen of 4DM-SPECT. The quick way to change the list is to (i) clear the list, and (ii) select the desired screens to add to the list via << button. In this example, we have also checked the “Imgs+Raw” screen to be the screen that will be displayed when the program starts or a new patient is loaded.

STEP 4: Create a New User for Settings

Type in the name of the new user, “JohnDoe” in the “New User” text box.

STEP 5: Save the Settings for this New User

Click Create. A dialog box will display and acknowledge that your changes have been saved. Once you click OK, the program will return to 4DM-SPECT main screen with the new settings for John_Doe.

HOT TIP: You can quickly select a user setting but right clicking on the “Defaults” button. This will display a list of available user settings.



Select the desired user, and the settings will be immediately applied.